



**ALPINE
DEMOLITION**



Capability Brochure

April 2026

Who we are



Alpine are an established, highly capable and competent demolition and decommissioning specialist. Alpine's knowledge and expertise within the deconstruction sector makes us a potential partner offering best value.

Our memberships and accreditations show our commitment to excellence in the field of demolition as well as to the training and development of our operatives, best working practice within the demolition field and the wider construction industry and our pride in our health & safety record.

Based in North Kent we undertake the Principal Contractor role as defined by the Construction (Design and Management) Regulations 2015 and the Building Act 2020, including site management, public interface, security and welfare, or subcontractor role providing site supervision, full documentation and control whilst working in concert with your own managers.

We have extensive experience of demolition works across the UK, mainly in London, the South East and the Home Counties. Our project portfolio ranges from small residential and community projects, through to extensive multi-discipline contracts, both as Principal Contractor and subcontractor.



Excellence in Demolition



Alpine are proud members of the National Federation of Demolition Contractors and we continually strive to improve our work, through investment in new efficient machinery, training our operatives to CCDO accreditation, specific to the demolition industry and ensuring that demolition standards are becoming safer and greener as well as ensuring our industry evolves to meet the challenges of the future.

3rd Party Audits



On a recent Considerate Constructors inspection we received a score of EXCELLENT, with the monitor saying “It was a pleasure to visit this site” and “The site is professionally presented”

SCORING	
Respect the Community	Excellent
Care for the Environment	Excellent
Value their Workforce	Excellent
Total Report Score	Excellent

Client References

“As with previous projects, I find Alpine Demolition to be very professional, with an excellent work ethic and an outstanding record on health & safety, programme and budget”

“Alpine and our management worked synchronously to ensure that local residents and stakeholders were all completely on board with the works.”

“Alpine have proven to us that they provide value with their approach. They carried out the works efficiently and always with the aim of ensuring the health and safety of all involved as well as ensuring the projects critical path programme was maintained.”

“I have no hesitation in recommending Alpine Demolition for any strip out project, understanding they will deliver any project safely, with a focus on providing solutions to ensure a successful project.”

Excellence in Demolition

Alpine have received excellent reports for NRMM compliance and high scores for CDM compliance and demolition procedure and control.



3rd Party Audits



Demolition Site Audit – March 2026 – 82.59%

CDM Compliance Audit – Feb 2026 – 95.10%



Non-Road Mobile Machinery Compliance Certificate

Excellent

Woodberry Down (Alpine Demolition)

Community Engagement

Director

Alpine Demolition

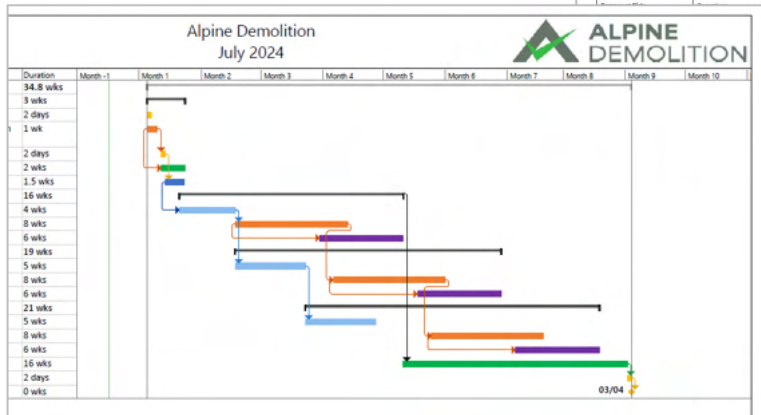
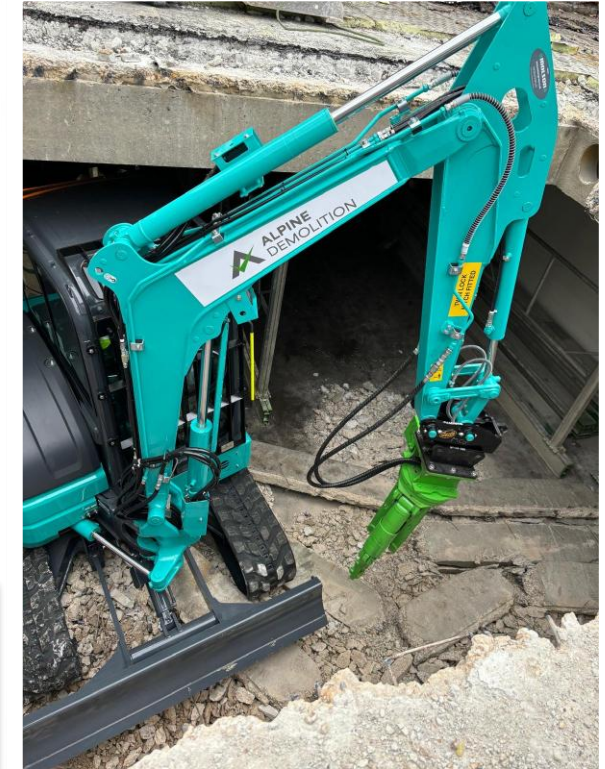
I would like to take this opportunity to thank Alpine Demolition for their generous support of the “Kensington, Chelsea, Hammersmith & Fulham OYS Road Safety Community Chart” campaign. I would also like to thank you personally for your valuable assistance in furthering this endeavour.

This campaign aims to promote safe road behaviour in and around school environments by reinforcing essential safety precautions and established road conventions. It focuses on teaching children, parents, and all road users the importance of simple but critical habits — such as stopping at the kerb, looking right, then left, and remaining alert before crossing or moving off.

The area outside a school can be busy and unpredictable, particularly at arrival and collection times. By encouraging consistent adherence to these fundamental safety practices, the campaign supports a wider national effort to reduce child injuries and fatalities outside schools.

What We do

- ✓ Preconstruction advice and planning
- ✓ Risk identification and mitigation
- ✓ Service isolations and diversions
- ✓ Soft strip & asbestos removal
- ✓ Temporary works
- ✓ Superstructure demolition
- ✓ Structural alterations
- ✓ Cut & Carve Works
- ✓ Substructure demolition
- ✓ Ground Enabling Works
- ✓ Remediation



Risk Assessment																											
Project:	Confidential	Client:	Confidential																								
Task / Operation:	Demolition of building using 360 with demolition attachment																										
Number at Risk:	2 - 4	Persons at Risk:	Operatives																								
Before Controls	After Controls	Control Measures																									
<table border="1"> <thead> <tr> <th>Likelihood</th> <th>Severity</th> <th>Risk Rating</th> </tr> </thead> <tbody> <tr> <td>5</td> <td>5</td> <td>25</td> </tr> <tr> <td>5</td> <td>5</td> <td>25</td> </tr> <tr> <td>5</td> <td>5</td> <td>25</td> </tr> </tbody> </table>	Likelihood	Severity	Risk Rating	5	5	25	5	5	25	5	5	25	<table border="1"> <thead> <tr> <th>Likelihood</th> <th>Severity</th> <th>Risk Rating</th> </tr> </thead> <tbody> <tr> <td>1</td> <td>5</td> <td>5</td> </tr> <tr> <td>1</td> <td>5</td> <td>5</td> </tr> <tr> <td>1</td> <td>5</td> <td>5</td> </tr> </tbody> </table>	Likelihood	Severity	Risk Rating	1	5	5	1	5	5	1	5	5	<ul style="list-style-type: none"> Plant movements to be banned at all times when interfacing with pedestrians Pedestrians on site to be segregated from vehicles on site No unauthorised personnel allowed in demolition zone Only trained and competent personnel to operate plant Demolition area to be securely cordoned off to prevent unauthorised access to area during demolition process creating a safe drop zone for rubble / debris No personnel allowed access to area during demolition process Works to continue to a safe state before leaving site Only trained and competent personnel to operate plant 360 to be fitted with cab protection Structural survey / study to be undertaken prior to works commencing with input from structural engineer where necessary Demolition area to be securely cordoned off to prevent unauthorised access to area during demolition process creating a safe drop zone for rubble / debris No personnel allowed access to area during demolition process Only trained and competent personnel to operate plant 360 to be fitted with cab protection 	
Likelihood	Severity	Risk Rating																									
5	5	25																									
5	5	25																									
5	5	25																									
Likelihood	Severity	Risk Rating																									
1	5	5																									
1	5	5																									
1	5	5																									
Date: 03/07/2024 Page: 1 of 1																											



Our Core Values



- ✓ *Health & Safety*
- ✓ *Best practice*
- ✓ *Protecting people & planet*
- ✓ *Quality*
- ✓ *Integrity*
- ✓ *Professionalism*
- ✓ *Reliability*
- ✓ *Teamwork*
- ✓ *Customer Focus*
- ✓ *Innovation*
- ✓ *Diligence*



Working with people, valuing everyone

Working safe, Being safe

Think it through. Talk it and Walk it. Plan it Out. Do the job right

Working to be better

*With an open mind we may learn from others. In learning we work better and more efficiently
With a “can do attitude” we can work together better and by thinking outside of the box we can do great things*

Working with respect

*Everyone here is valuable; their mentality and emotion is vital to their wellbeing
Everyone here can contribute to our success
Everyone here can enable each other, when we listen to each other we all “win”*

Working with Integrity

*Deliver what you say you will, never compromising on quality
Work ethically, with the welfare of yourself and others the priority*

Working as a team

*Don't work alone, use the people around you to help everyone
Listen and participate. If you haven't heard it said, SAY IT!
Make sure you and the people around you are safe*





Managing health and safety in construction

Construction (Design and Management) Regulations 2015

Health & Safety Approach

- ▶ Our approach to the inherent risks of demolishing buildings are:
 - ▶ Detailed pre-start induction that highlights the demolition method and associated risks
 - ▶ Site awareness briefing on what to look out for including specific hazards
 - ▶ Maintaining access routes, pedestrian routes and public interface
 - ▶ Daily pre-start safety briefings
 - ▶ Continual review of demolition process to avoid uncontrolled collapse or on discovery of additional risk
 - ▶ Keeping a consistent skilled team on the site who understand the operation. All operatives to be CSCS or CCDO accredited, with plant operatives holding CPCS A59 or D90 cards
 - ▶ Expertise in hazardous materials remediation and the health & safety risks attached to those works
 - ▶ Following traffic management plans

Accreditations & Insurance



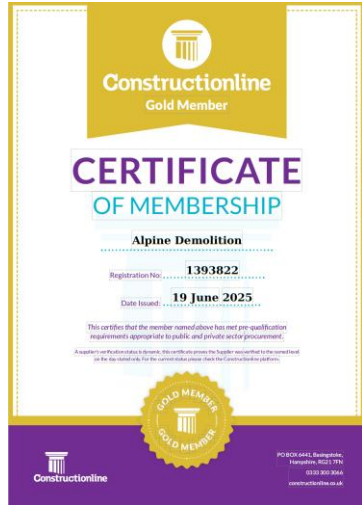
Alpine Demolition hold the following accreditations

Constructionline Gold

ISO 9001

ISO 14001

ISO 45001



Alpine hold demolition specific insurance covering all of our operations.

- ✓ £10 million Employers Liability
- ✓ £20 million Public & Product Liability
- ✓ £2 million Contract Works Cover
- ✓ Project specific uplift as required



Soft Strip

- ✓ *Careful planning and protection*
- ✓ *Ensuring that operatives are not exposed to harmful chemicals or biological agents*
- ✓ *Removal of furniture and fixings*
- ✓ *Making safe and removal of mechanical and electrical components.*

Soft strip works are often the first works to be completed on a demolition project alongside asbestos removal works.

These works are often the most “hands on” components of a demolition project, with operatives removing items by hand to waste processing and separation into waste streams



Structural Alterations, Cut and Carve

- ✓ *Close collaboration & integration with client, architect & structural engineer*
- ✓ *Liaison with preferred subcontractors when appointed*
- ✓ *Opening up works to establish connection details and member sizes, loading capacity and spatial constraints*
- ✓ *Early engagement with structural steel contractor, if not part of the Alpine contract*

Altering structures is a delicate balance of removing unwanted components whilst ensuring that the remaining structure has the capacity to support itself or by the use of temporary works elements until the building is ready to be built into its new form

Alpine Demolition will work with your design team from project inception to undertake the works safely and quickly to enable your project to proceed and bring your vision to reality



Superstructure Demolition

- ✓ *Top-down*
- ✓ *Standard excavator*
- ✓ *High reach excavator*
- ✓ *Diamond sawing & cutting*

Our methodology will be driven by the specific requirements of the project, with multi-discipline works forming a large part of our portfolio.



Superstructure or principal demolition makes up the core of our works.

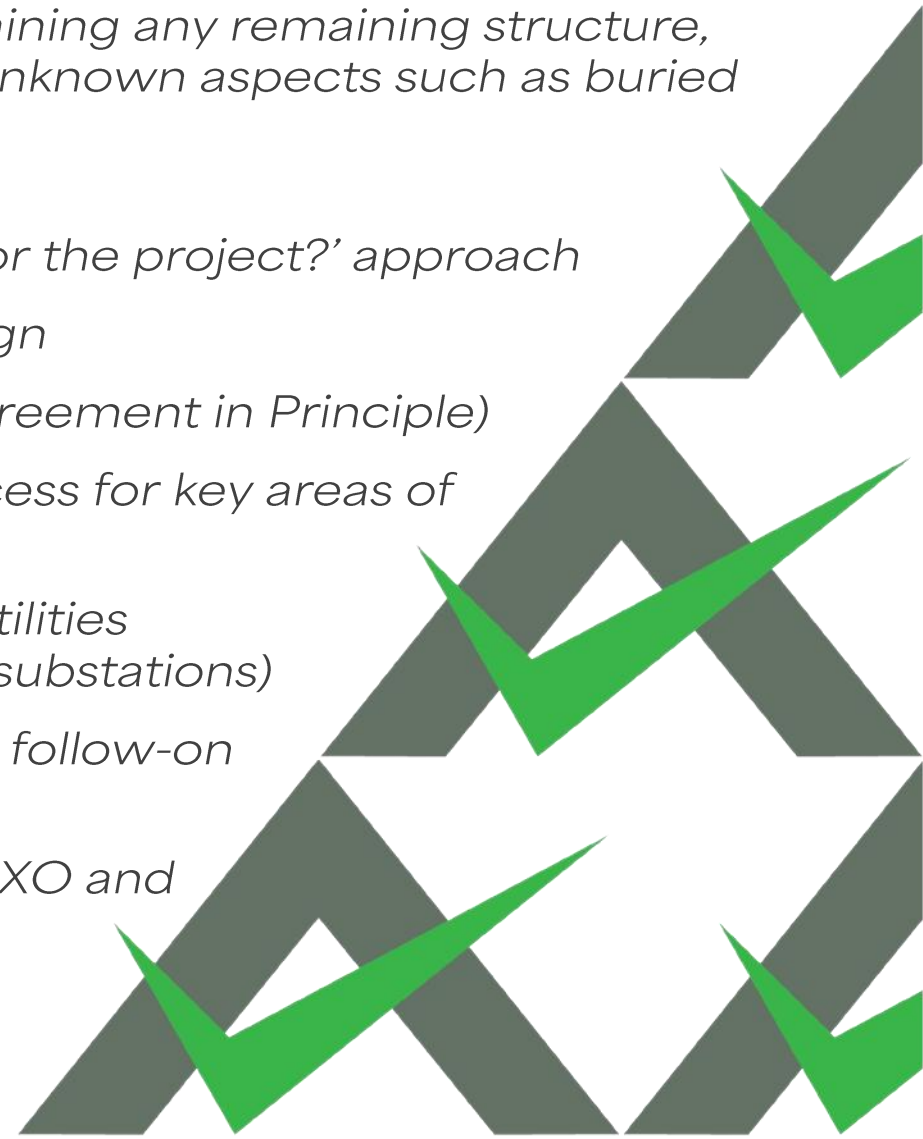
Re-use & recycling is one of our primary focusses – over 87% of materials arising from our works in 2024 was recycled, either being processed for reuse on site such as aggregates or send for processing elsewhere by our licensed waste handling partners.

Substructure Demolition & Ground Enabling



Working in the ground comes with it's own set of risks and mitigations, including retaining any remaining structure, archaeological impacts, unknown aspects such as buried services or even bombs.

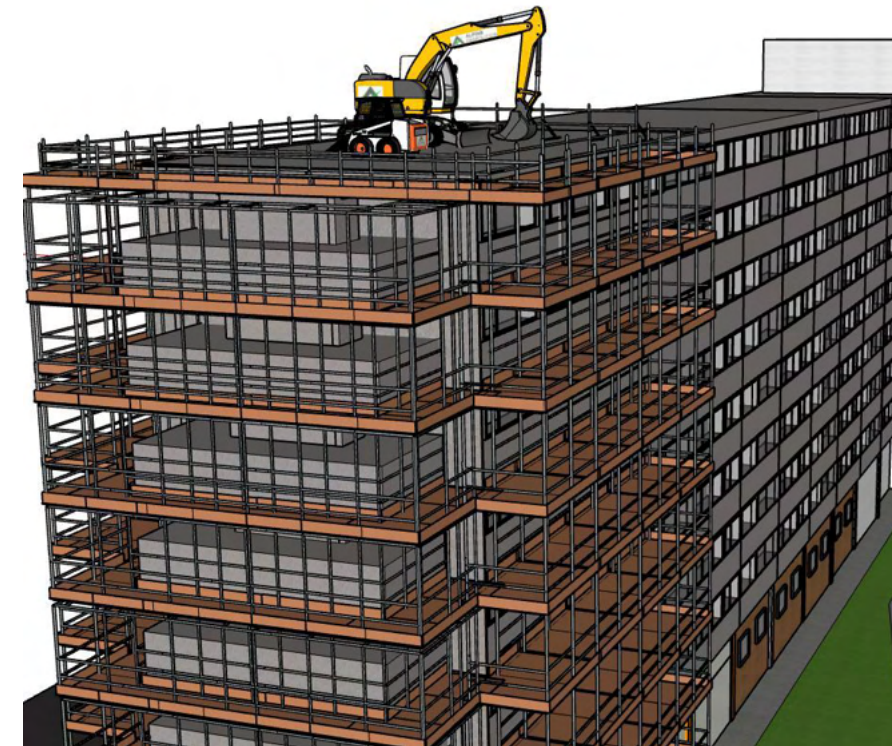
- ▶ *Adopt a 'What is best for the project?' approach*
- ▶ *Temporary Works design*
- ▶ *Necessary licences (Agreement in Principle)*
- ▶ *Agreement of early access for key areas of the site*
- ▶ *Liaison / resolution of utilities (temporary removal of substations)*
- ▶ *Early engagement with follow-on trades / contractors*
- ▶ *De-risk demolition by UXO and pile surveys*



Top Down Methodology

To safely demolish tower blocks and structures where conventional methods would pose a height risk or additional risk the public we will utilise top down demolition methods. This includes installation of scaffold to the full height of the structure to protect the public from the works, act as dust suppression and to enable our operatives to work safely at height. A mobile crane will lift small excavators to the roof which will then commence demolition operations

The works will progress sequentially with the floors propped as required under temporary works controls, with arisings removed to ground to be streamed and removed, ensuring floor loadings are within tolerance



Reducing the impact on the local community

- ▶ *Work with stakeholders in the community*
- ▶ *Ensure awareness of our works and the safety of those most affected*
- ▶ *All suppliers and hauliers required to hold FORS Silver as a minimum*
- ▶ *Traffic management plans conform to CLOCS standard*
- ▶ *We work with the highways agency, local councils and TfL to ensure our works can be delivered safely and with minimal disruption to local and wider road networks*
- ▶ *Project management teams are available to meet with any concerned parties, discuss their issues and as necessary formulate processes that mitigate the issues.*
- ▶ *Our CCDO accredited Managers are well versed in mitigation techniques and liaison with stakeholders.*

**CONSIDERATE
CONSTRUCTOR
SCHEME**

- ▶ *Alpine Demolition can register our sites for Considerate Constructors, providing another layer of inspection and audit*



Environmental Approach

- ▶ *WORKING WITH THE LOCAL COMMUNITY*
 - ▶ *Alpine fully understand that the disruption to the local community needs to be minimised.*
 - ▶ *Demolition process: Munch more, Impact breaking less.*
 - ▶ *Avoid traffic movements during peak hours - these will be coordinated with local rush hours or local school times*
 - ▶ *Noisy working hours will be limited depending on local noise receptors*
 - ▶ *Damp down to reduce dust generation at source. Do not allow dust propagation*
 - ▶ *Dust, Noise and Vibration monitoring can be included in our works package, ensuring reduced impact on local receptors*



Environmental Compliance



- ▶ We meet the compliance standards of working in London, NRMM, NT31, 82 and 88 of TOMs
- ▶ To reduce the carbon footprint of the Company and in line with our policies and ISO accreditations, alpine will:
 - ▶ Recycle as much as possible. Reclaim where preferable
 - ▶ Over 90% of materials on our projects is reclaimed, reused or recycled
 - ▶ Wherever possible materials to be reused on the site, removing the requirement for haulage & carbon miles
 - ▶ Segregate waste into streams. Avoid cross-contamination
 - ▶ Record waste quantities and disposal methods.
 - ▶ Use modern, well maintained machines to reduce carbon footprint.

Environmental Protection

- ▶ *Alpine will use local council TPO lists and plans to determine Tree Protection Orders and Conservation areas to determine which areas or trees must be protected*
- ▶ *We will undertake relevant ecological surveys prior to mobilization to ensure appropriate protections, actions, licenses and watching briefs are in place*
- ▶ *Our works will be coordinated and arranged to ensure the protection of these species whilst ensuring your works incur minimal disruption*
- ▶ *Where breaking or crushing works are to be undertaken on a project the breaking works will be sited such that it is as far from any vulnerable receptor as possible*
- ▶ *Materials from the works will be processed on site to be stockpiled safely on site for use in pads, backfill or other use, or removed by HGVs to be reused elsewhere*
- ▶ *Dust arisings will be monitored to ensure any dust does not oversail the boundary*

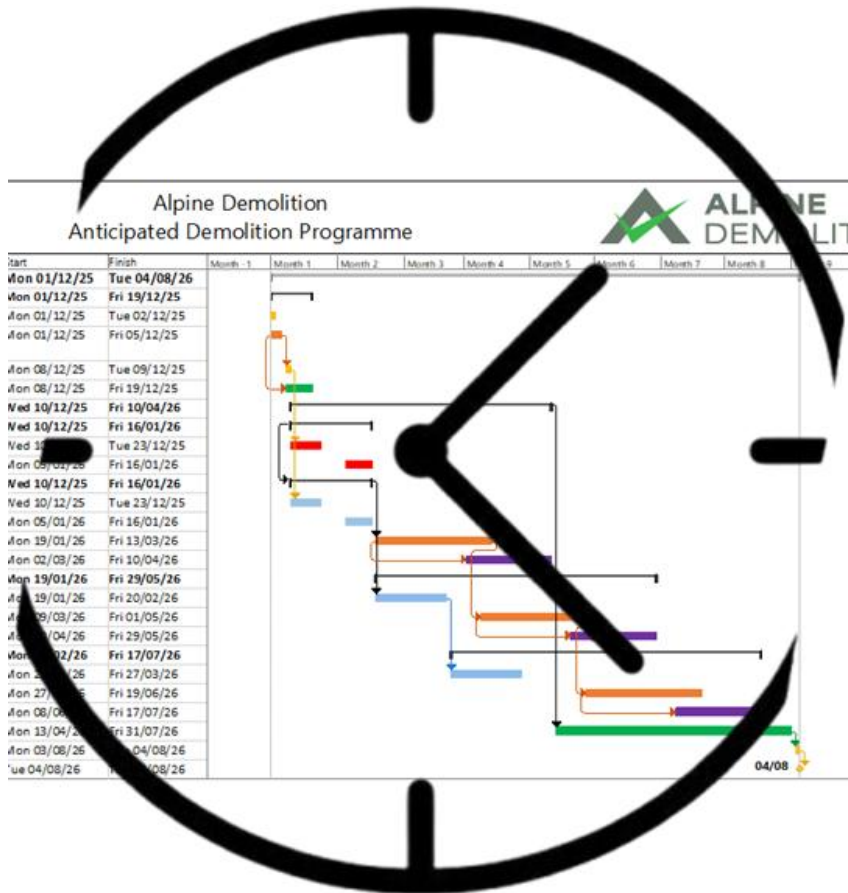


Asbestos materials

- ▶ A Demolition & Refurbishment asbestos survey will be obtained for each building
- ▶ The surveys will locate and describe all asbestos materials in the buildings
- ▶ Licensed asbestos materials will be removed by an Alpine appointed licensed asbestos removal contractor
- ▶ Non-licensed removal may be undertaken by Alpine Demolition. Our operatives hold Cat B non-licensed asbestos removal accreditation.



Project Programme



Full programs will be provided with updated documents given throughout the works

For longer and more complex projects our commercial and operational teams will provide fully qualified and resourced programs that will allow further works to be scheduled alongside or following our works

Alpine have had multiple sites where phased handover of site and side along working has been managed successfully.

Our managers and commercial teams are aware that following trades form a large part of the work we undertake.

Personal Protective Equipment (PPE)

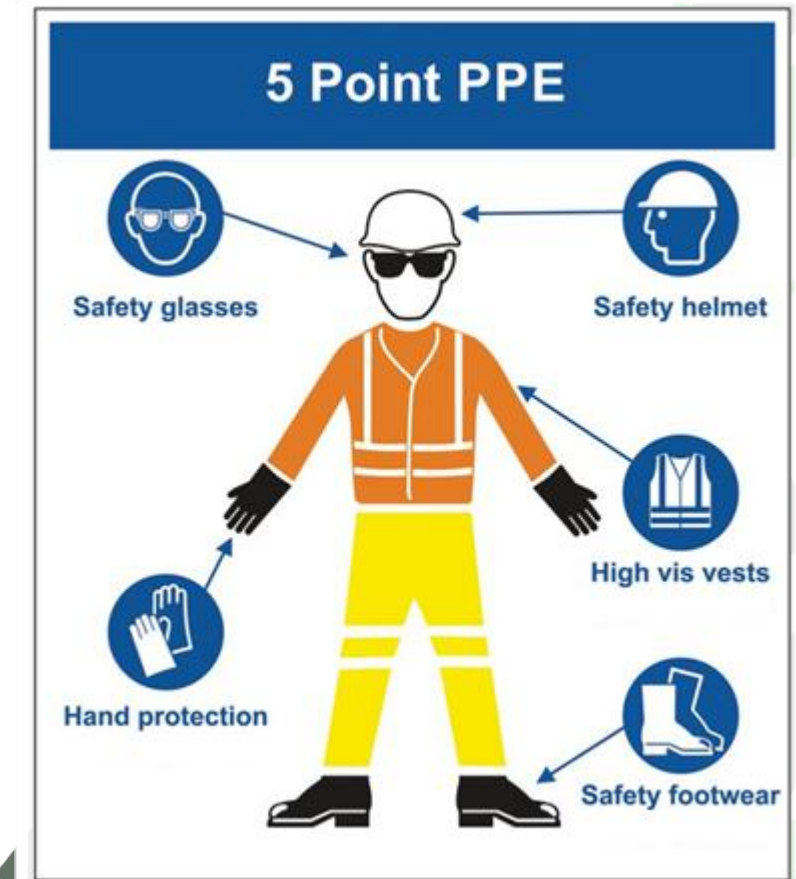
5 point PPE is available on all of our sites

Mandatory PPE : hard hat, hi viz, boots including sole protection with gloves & safety glasses provided

Operatives will be supplied with the correct level of personal protection including but not limited to:

- ▶ *Type 5 white disposable overall* *BS EN 13982-2*
- ▶ *Particulate dust mask* *BS EN 143*
- ▶ *Hi-vis jacket / vest* *BS EN 471*
- ▶ *Helmet* *BS EN 397*
- ▶ *Safety boots* *BS EN 345*
- ▶ *Eye protection impact* *BS EN 166B Grade 1*
- ▶ *Protective gloves* *BS EN 388*
- ▶ *Ear defenders* *BS EN 352*

Any additional PPE or RPE requirements of the client or landowner will be abided by at all times



Public Interface and Site Access

- ▶ *Public interface*
 - ▶ *inspection of the boundary each day*
 - ▶ *monitoring of access points*
 - ▶ *ensuring that all persons on site are known to site management*
- ▶ *All demolition and working areas will be “red working zones”*
- ▶ *Areas between working zones will be “yellow non-working zones”*
- ▶ *The welfare and office areas will be “green non-working zones”*
- ▶ *Deliveries and waste away will be staggered to avoid vehicles waiting on the roadway*
- ▶ *Access and roadways will be swept routinely to avoid built up of dust and mud*
- ▶ *Security will be in place out of hours to ensure no encroachment*



Welfare

- ▶ *Where welfare is provided by Alpine Demolition we will ensure that the welfare is suitable for the personnel load throughout the project and balance the load appropriately*
- ▶ *Welfare will be installed within green zones (non-PPE) with pedestrian access allowed to the toilets, canteen and office facilities*
- ▶ *We will hire units in from reputable suppliers for the duration of the demolition works, available to Alpine and our specialist contractors as well as any visitors, meetings and so on*
- ▶ *Our welfare will usually include:*
 - ▶ *Office facilities*
 - ▶ *Toilets*
 - ▶ *Canteen with hot and cold running water, food preparation and waste disposal facilities*
- ▶ *Our welfare can be uprated to meet client specification and either removed at the end of our program, or by arrangement left onsite for further works*



Crushing works



- ▶ *Alpine own and operate mobile crushing plant*
- ▶ *Crushing works can be undertaken once enough space has been cleared and material is available to be processed*
- ▶ *Materials arising from the demolition works will can processed and used as a piling mat on site, removed for reuse elsewhere or sold as recycled material*
- ▶ *The crusher will be loaded and material stockpiled away f rom the current demolition face as a separate body of work*
- ▶ *Dust arisings from the crushing works will be routinely monitored with boundary recording of dust undertaken regularly, recorded on our in house document systems*
- ▶ *Damping down will be used to mitigate dust arisings, with the crusher having on machine water fed suppression systems and additional damping will be used where necessary*
- ▶ *Windspeed will be monitored to ensure any dust arisings do not oversail the boundary*



Client – Berkeley Homes

Project Value - £2,000,000

Project Program – 28 Weeks

PROJECT TEAM

David Lee, Stuart Tottman, Noel Corbett,
Mike Brown

SCOPE OF WORKS

Strip out and asbestos removal works
Demolition of 6 apartment blocks
Design and install pile mat, extensive
ground works incl. remediation

CHALLENGES

Stringent health & safety controls
Working with Berkeley Homes and local
council in a congested urban area
Tight program to turn around over
approx. 200 apartments, live services.

SUMMARY

This project will enable the client to build
over 300 new homes on this project
which is Phase 4 of a multi-stage project.
Acting as PC Alpine will recycle over 90%
of materials for reuse in the ongoing
project

PROJECT REVIEW - Woodberry Down Ph4, London N4



Client – Arcadis

Project Value - £4,100,000

Project Program – 80 Weeks

PROJECT TEAM

John Price, Mike Brown, David Flack

SCOPE OF WORKS

Enabling and Strip out works for previously delayed refurbishment project
Demolition of 3 storey rear wall
Extensive steel, carpentry, window and restoration works throughout

CHALLENGES

Historic building, including management of refurbishment of facade
Confined urban environment
Strict local council rules
Pit lane operation on High Street

SUMMARY

A high class team of operatives undertaking detailed works to protect the retained structure whilst enabling the investigation and then undertaking and managing renovation works
A keystone project in an exclusive location in London

PROJECT REVIEW - Kensington High Street, W8



Client – Walton Landscaping Supplies

Project Value - £135,000

Project Program – 9 Weeks

PROJECT TEAM

David Lee, Danny Maskell

SCOPE OF WORKS

Demolition of 2 storey industrial building on light industrial area in Northern Surrey

CHALLENGES

Very tight program

Working with live traffic and working lumber yard in surrounding site

SUMMARY

Strip out works, including extensive CAT B asbestos removal, started on 6th Jan 2026; principal demolition works commenced two weeks later and by 13th February the building was gone and the cleared land released to the client.

PROJECT REVIEW - Jubilee House, Chessington, Surrey KT9



Client – Yellowstone Homes

Project Value - £985,000

Project Program – 24 Weeks

PROJECT TEAM

Beanland Associate Architects

Billy Johnson

David Lee

SCOPE OF WORKS

Termination of existing services.

Protect live UKPN substation.

Asbestos removal.

Demolish hospital buildings.

Clean and store bricks for re-use.

Grub out ground bearing slabs and foundations. Crush arisings.

CHALLENGES

Minimise dust levels due to live hospital.

Ensure site traffic did not affect operational hospital next door

SUMMARY

- Recycled 98%
- Cleaned and palleted bricks and slates for re-use later.
- Cleaned and stored timber for re-use later.
- Stockpiled aggregates.

PROJECT REVIEW - Buckland Hospital, Dover



Client – Acetate Products Limited

Project Value - £3,140,000

Project Program – 38 Weeks

PROJECT TEAM

RVA Consulting Engineers,
David Lee, Mike Brown

SCOPE OF WORKS

Heavy plant removal and demolition of large industrial site including cooling towers.

Demolition scaffolding between housing.
CCTV surveys, noise, dust & vibration monitoring. Site crushing of arisings.

CHALLENGES

Coventry Canal bisected site. Liaison with British Waterways

Maintain river flow and ensure no contamination or environmental issues.

SUMMARY

Use of large plant to carry out the demolition to buildings to minimise use of explosives. This kept the cost lower.
Successful blow-down of cooling towers.
90-95% recycling

PROJECT REVIEW - Courtaulds Factory, Coventry



Client – Anderson Group

Project Value - £540,000

Project Program – 14 Weeks (2 visits)

PROJECT TEAM

Davies Maguire Engineer

Andersons (QS)

Heritage Conversation

Stuart Hutchings, David Lee

SCOPE OF WORKS

Carry out SI and design TWS.

Erect demolition scaffolding.

Removal of asbestos.

Structural alteration of listed buildings including diamond sawing.

Temporary weatherproofing to safeguard the listed buildings.

CHALLENGES

Demolition of a building within a heritage area. Narrow streets

Local residents close by. River Lee runs adjacent.

SUMMARY

Working with Anderson to carry out the 2 phases to meet their programme.

Cleaned and palletted bricks for re-use.

PROJECT REVIEW – Swan Wharf, Tower Hamlets



Client – Fairview New Homes

Project Value - £648,000

Project Program – 20 Weeks

PROJECT TEAM

Fairview New Homes

David Lee, Noel Corbett

SCOPE OF WORKS

Tree protection & selected removal.

Asbestos removal. M&E Removal .

Demolition of data centre including
basement box and foundations.

Removal of large substructure

Removal of fuel and water tanks.

Pile probe and install piling mat.

CHALLENGES

Large number of trees under TPO which
required pollarding.

Decontaminate & remove asbestos.

Cut & Fill groundworks.

SUMMARY

Demolition of legacy industrial building
with contamination requiring controlled
processes for a large client

Constrained environs and working in close
co-operation with others

Tree protection paramount

PROJECT REVIEW - Ford Data Centre, Brentwood



Client – RED Construction

Project Value - £648,000

Project Program – 20 Weeks

PROJECT TEAM

RED Construction Management

David Lee

Noel Corbett

SCOPE OF WORKS

Demolition of public interface walls

Management of licensed asbestos removal

Principal demolition of superstructure

Demolition of basement

CHALLENGES

Direct interface with busy road, requiring managed delivery times

Decontaminate and remove asbestos

Cut & Fill groundworks.

SUMMARY

Demolition of former care home as part of building upgrade process

Urban location requiring strict controls on local environment emissions and impact

PROJECT REVIEW – Royal Cambridge Home, Molesey



Client – ISG

Project Value - £1,700,000

Project Program – 24 Weeks

PROJECT TEAM

QS: Adrian Ashbourne

David Lee

Stuart Hutchings

SCOPE OF WORKS

Soft strip and asbestos removal.

Top down structural demolition of 8 storeys above ground & 3 storeys below.

Design and install temporary steel support works.

Removing heavy duty bank vaults.

Groundworks.

CHALLENGES

Deconstruction in city environment with adjoining properties.

Removing heavy duty bank vaults.

SUMMARY

9 storey office block in the City of London

Top down methodology

Groundworks undertaken in the basement whilst demolition was progressing

PROJECT REVIEW - Lombard Street, City of London



Client – Fairview Homes

Project Value - £1,800,000

Project Program – 28 Weeks

PROJECT TEAM

David Lee, Mike Brown
Noel Corbett

SCOPE OF WORKS

Principal Contractor

Asbestos removal work management

Demolition of all buildings, slabs & foundations

Reduced level dig

Site remediations

On-site recycling & concrete crushing

Installation of 15,000m² piling mat

CHALLENGES

Discovery and dealing with additional ACMs and unknown below ground tanks and interceptors.

Consolidating formation level and installation of pile mat during extremely wet February 2020.

SUMMARY

Phased handover to enable early piling and mitigate delay due to wet weather.

All works completed to client satisfaction.

PROJECT REVIEW – Chailey Industrial Estate, Hayes



Client – Knight Webb

Project Value - £960,000

Project Program – 25 Weeks

PROJECT TEAM

Block Industrial

CDM Contract Services

David Lee

Billy Johnson

SCOPE OF WORKS

Decommissioning of factory estate.

Removal of asbestos and other

Hazardous materials

Crush all arisings.

CHALLENGES

Stability during demolition.

Decontaminating.

Removal of the underground structures

SUMMARY

Recycled 98% of materials arising

Major earthworks while contending with contaminated soils.

PROJECT REVIEW - Weetabix Factory, Corby





ALPINE DEMOLITION



Email

janice@alpinedemolition.co.uk



Phone

01474 741 111



Alpine Demolition Limited

Weighbridge House,

Grove End Farm,

Bredgar Road,

Tunstall, Kent,

ME9 8DY