



# ALPINE DEMOLITION

## Capability Brochure

February 2026



# Who we are



*Alpine are an established, highly capable and competent demolition and decommissioning specialist. Alpine's knowledge and expertise within the deconstruction sector makes us a potential partner offering best value.*

*Our memberships and accreditations show our commitment to excellence in the field of demolition as well as to the training and development of our operatives, best working practice within the demolition field and the wider construction industry and our pride in our health & safety record.*

*Based in North Kent we undertake the Principal Contractor role as defined by the Construction (Design and Management) Regulations 2015 and the Building Act 2020, including site management, public interface, security and welfare, or subcontractor role providing site supervision, full documentation and control whilst working in concert with your own managers.*

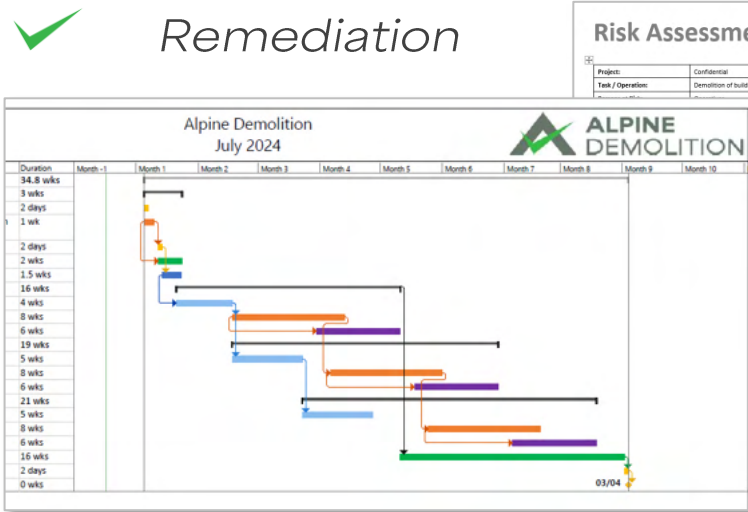
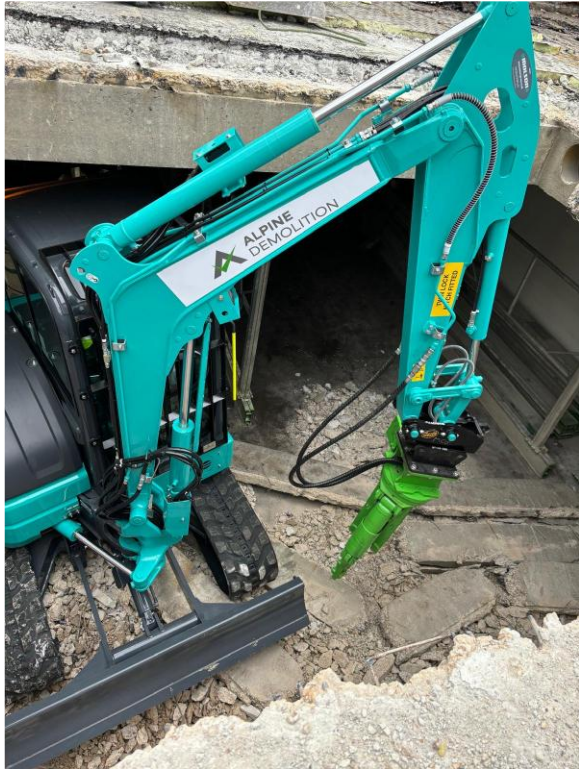
*We have extensive experience of demolition works across the UK, mainly in London, the South East and the Home Counties. Our project portfolio ranges from small residential and community projects, through to extensive multi-discipline contracts, both as Principal Contractor and subcontractor.*





# What We do

- ✓ Preconstruction advice and planning
- ✓ Risk identification and mitigation
- ✓ Service isolations and diversions
- ✓ Soft strip & asbestos removal
- ✓ Temporary works
- ✓ Superstructure demolition
- ✓ Structural alterations
- ✓ Cut & Carve Works
- ✓ Substructure demolition
- ✓ Ground Enabling Works
- ✓ Remediation



# Risk Assessment

Project: Confidential  
Task / Operation: Demolition of building using 360 with demolition attachment

Critic: Confidential

Number at Risk: 2 - 4

Persons at Risk: Operators

## Before Controls

Likelihood

Severity

Risk Rating

Plant movements to be banked at all times when interfacing with pedestrians

Pedestrians on site to be segregated from vehicles on site

No unauthorised personnel allowed in demolition zone

Only trained and competent personnel to operate plant

Demolition area to be securely cordoned off to prevent unauthorised access to area during demolition process creating a safe drop zone for rubble / debris

No personnel allowed access to area during demolition process

Works to continue to a safe state before leaving site

Only trained and competent personnel to operate plant

360 to be fitted with cab protection

Likelihood

Severity

Risk Rating

Structural survey / study to be undertaken prior to works commencing with input from structural engineer where necessary

Demolition area to be securely cordoned off to prevent unauthorised access to area during demolition process creating a safe drop zone for rubble / debris

No personnel allowed access to area during demolition process

Only trained and competent personnel to operate plant

360 to be fitted with cab protection

## Control Measures

After Controls

Likelihood

Severity

Risk Rating

1

5

5

1

5

5

1

5

5

1

5

5

1

5

5

1

5

5

1

5

5

1

5

5

1

5

5

1

5

5

1

5

5

1

5

5

1

5

5

1

5

5

1

5

5

1

5

5

1

5

5

1

5

5

1

5

5

1

5

5

1

5

5

Ref

Date

01/10/20

Control Measures: 5 - 20 | 5 - 20 | 5 - 20 | Action required to control. Impact measured after the measures

Page 1 of 1



# Our Core Values

- ✓ *Health & Safety*
- ✓ *Best practice*
- ✓ *Protecting people & planet*
- ✓ *Quality*
- ✓ *Integrity*
- ✓ *Professionalism*
- ✓ *Reliability*
- ✓ *Teamwork*
- ✓ *Customer Focus*
- ✓ *Innovation*
- ✓ *Diligence*



# Working with people, valuing everyone



## Working safe, Being safe

*Think it through. Talk it and Walk it. Plan it Out. Do the job right*

---

## Working to be better

*With an open mind we may learn from others. In learning we work better and more efficiently  
With a “can do attitude” we can work together better and by thinking outside of the box we can do great things*

---

## Working with respect

*Everyone here is valuable; their mentality and emotion is vital to their wellbeing  
Everyone here can contribute to our success  
Everyone here can enable each other, when we listen to each other we all “win”*

---

## Working with Integrity

*Deliver what you say you will, never compromising on quality  
Work ethically, with the welfare of yourself and others the priority*

---

## Working as a team

*Don't work alone, use the people around you to help everyone  
Listen and participate. If you haven't heard it said, SAY IT!  
Make sure you and the people around you are safe*

---







# Managing health and safety in construction

Construction (Design and Management) Regulations 2015

## Health & Safety Approach

- ▶ Our approach to the inherent risks of demolishing buildings are:
  - ▶ Detailed pre-start induction that highlights the demolition method and associated risks
  - ▶ Site awareness briefing on what to look out for including specific hazards
  - ▶ Maintaining access routes, pedestrian routes and public interface
  - ▶ Daily pre-start safety briefings
  - ▶ Continual review of demolition process to avoid uncontrolled collapse or on discovery of additional risk
  - ▶ Keeping a consistent skilled team on the site who understand the operation. All operatives to be CSCS or CCDO accredited, with plant operatives holding CPCS A59 or D90 cards
  - ▶ Expertise in hazardous materials remediation and the health & safety risks attached to those works
  - ▶ Following traffic management plans

# Accreditations & Insurance



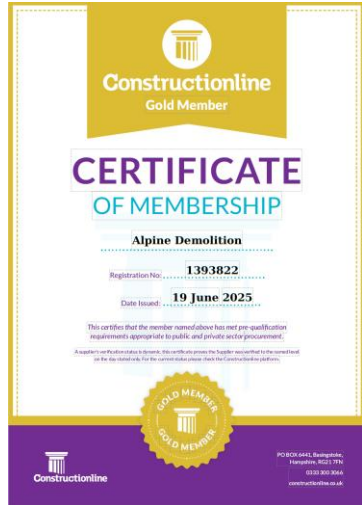
*Alpine Demolition hold the following accreditations*

Constructionline Gold

ISO 9001

ISO 14001

ISO 45001



*Alpine hold demolition specific insurance covering all of our operations.*

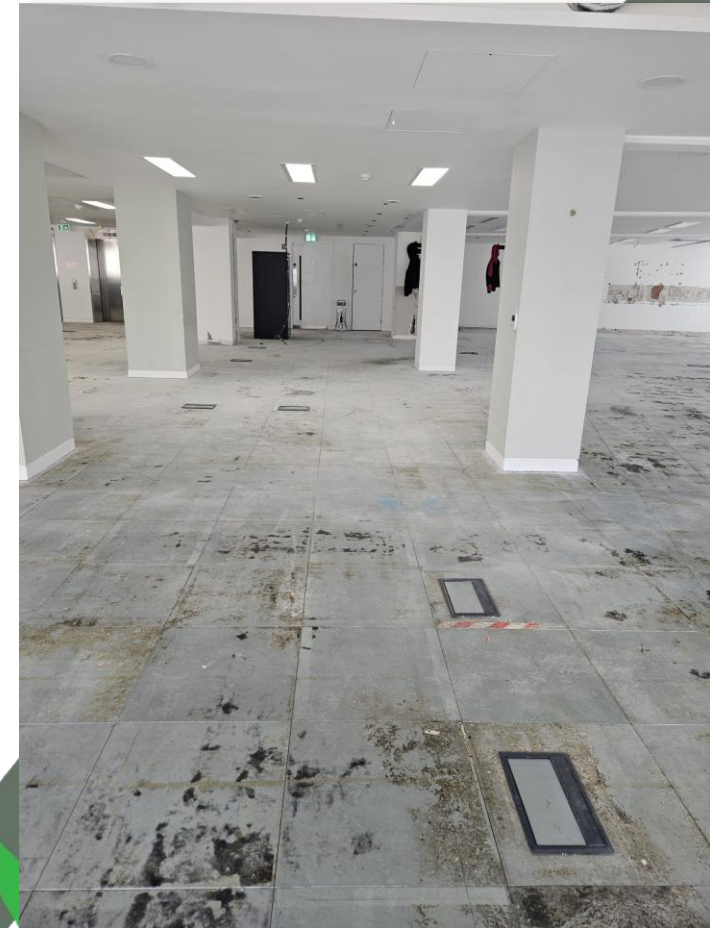
- ✓ £10 million Employers Liability
- ✓ £20 million Public & Product Liability
- ✓ £2.5 million Contract Works Cover
- ✓ Project specific uplift as required

# Soft Strip

- ✓ *Careful planning and protection*
- ✓ *Ensuring that operatives are not exposed to harmful chemicals or biological agents*
- ✓ *Removal of furniture and fixings*
- ✓ *Making safe and removal of mechanical and electrical components.*

*Soft strip works are often the first works to be completed on a demolition project alongside asbestos removal works.*

*These works are often the most “hands on” components of a demolition project, with operatives removing items by hand to waste processing and separation into waste streams*



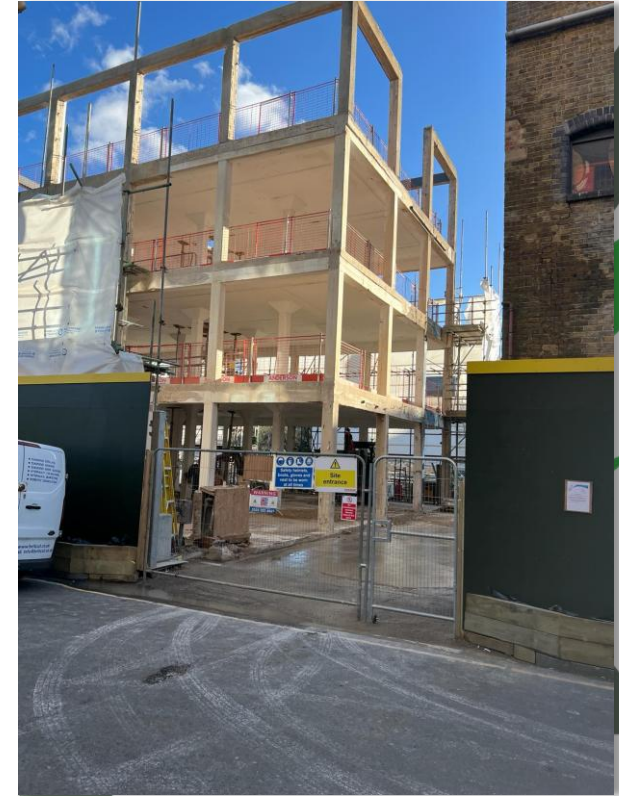


# Structural Alterations, Cut and Carve

- ✓ *Close collaboration & integration with client, architect & structural engineer*
- ✓ *Liaison with preferred subcontractors when appointed*
- ✓ *Opening up works to establish connection details and member sizes, loading capacity and spatial constraints*
- ✓ *Early engagement with structural steel contractor, if not part of the Alpine contract*

*Altering structures is a delicate balance of removing unwanted components whilst ensuring that the remaining structure has the capacity to support itself or by the use of temporary works elements until the building is ready to be built into its new form*

*Alpine Demolition will work with your design team from project inception to undertake the works safely and quickly to enable your project to proceed and bring your vision to reality*



# Superstructure Demolition

- ✓ *Top-down*
- ✓ *Standard excavator*
- ✓ *High reach excavator*
- ✓ *Diamond sawing & cutting*

*Our methodology will be driven by the specific requirements of the project, with multi-discipline works forming a large part of our portfolio.*



*Superstructure or principal demolition makes up the core of our works.*

*Re-use & recycling is one of our primary focusses - over 87% of materials arising from our works in 2024 was recycled, either being processed for reuse on site such as aggregates or send for processing elsewhere by our licensed waste handling partners.*

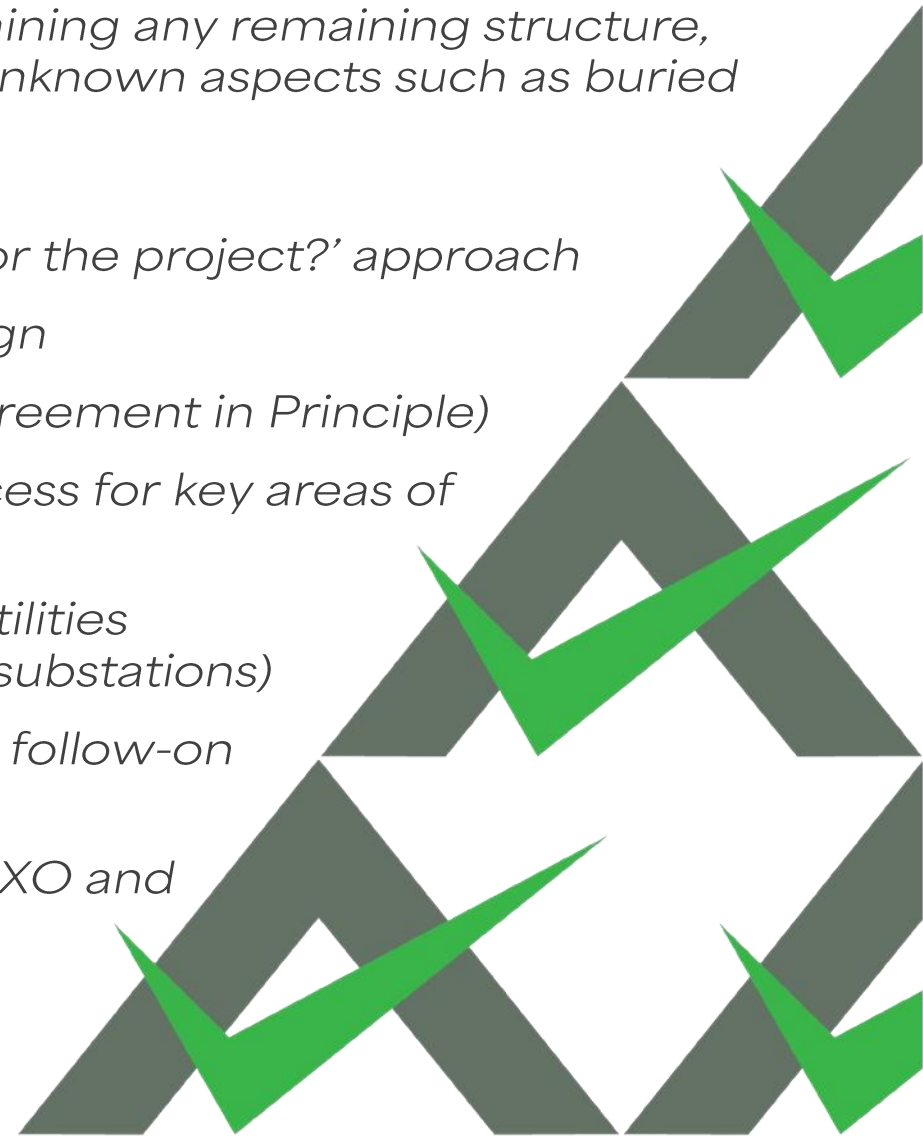


# Substructure Demolition & Ground Enabling



*Working in the ground comes with it's own set of risks and mitigations, including retaining any remaining structure, archaeological impacts, unknown aspects such as buried services or even bombs.*

- ▶ *Adopt a 'What is best for the project?' approach*
- ▶ *Temporary Works design*
- ▶ *Necessary licences (Agreement in Principle)*
- ▶ *Agreement of early access for key areas of the site*
- ▶ *Liaison / resolution of utilities (temporary removal of substations)*
- ▶ *Early engagement with follow-on trades / contractors*
- ▶ *De-risk demolition by UXO and pile surveys*





# Reducing the impact on the local community

- ▶ *Work with stakeholders in the community*
- ▶ *Ensure awareness of our works and the safety of those most affected*
- ▶ *All suppliers and hauliers required to hold FORS Silver as a minimum*
- ▶ *Traffic management plans conform to CLOCS standard*
- ▶ *We work with the highways agency, local councils and TfL to ensure our works can be delivered safely and with minimal disruption to local and wider road networks*
- ▶ *Project management teams are available to meet with any concerned parties, discuss their issues and as necessary formulate processes that mitigate the issues.*
- ▶ *Our CCDO accredited Managers are well versed in mitigation techniques and liaison with stakeholders.*



- ▶ *Alpine Demolition can register our sites for Considerate Constructors, providing another layer of inspection and audit*



# Environmental Approach

- ▶ **WORKING WITH THE LOCAL COMMUNITY**
  - ▶ *Alpine fully understand that the disruption to the local community needs to be minimised.*
  - ▶ *Demolition process: Munch more, Impact breaking less.*
  - ▶ *Avoid traffic movements during peak hours – these will be coordinated with local rush hours or local school times*
  - ▶ *Noisy working hours will be limited depending on local noise receptors*
  - ▶ *Damp down to reduce dust generation at source. Do not allow dust propagation*
  - ▶ *Dust, Noise and Vibration monitoring can be included in our works package, ensuring reduced impact on local receptors*





# Environmental Compliance



- ▶ We meet the compliance standards of working in London, NRMM, NT31, 82 and 88 of TOMs
- ▶ To reduce the carbon footprint of the Company and in line with our policies and ISO accreditations, alpine will:
  - ▶ Recycle as much as possible. Reclaim where preferable
  - ▶ Over 90% of material will be reclaimed, reused or recycled
  - ▶ Wherever possible materials to be reused on the site, removing the requirement for haulage & carbon miles
  - ▶ Segregate waste into streams. Avoid cross-contamination
  - ▶ Record waste quantities and disposal methods.
  - ▶ Use modern, well maintained machines to reduce carbon footprint.



# Environmental Protection

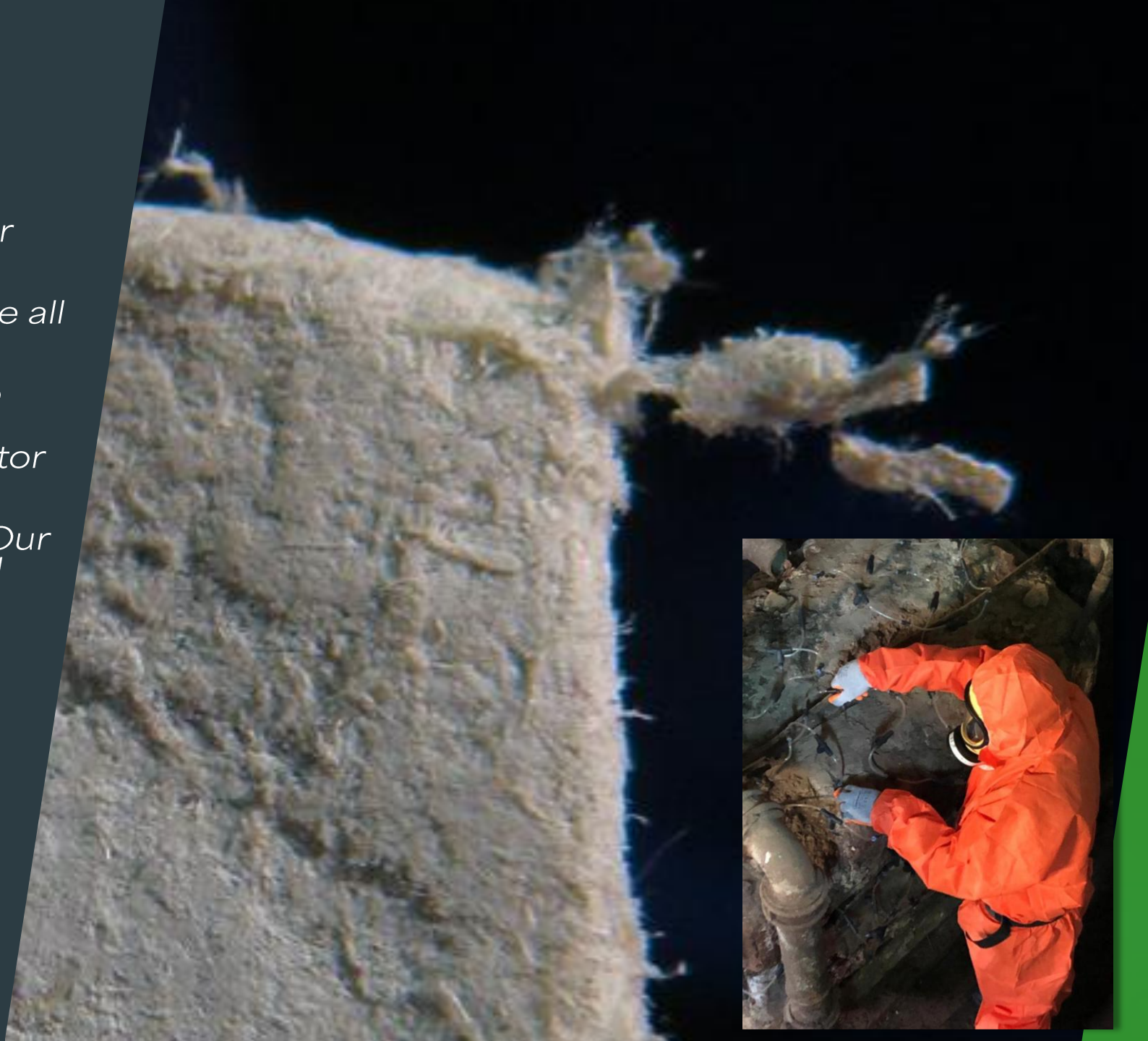
- ▶ *Alpine will use local council TPO lists and plans to determine Tree Protection Orders and Conservation areas to determine which areas or trees must be protected*
- ▶ *We will undertake relevant ecological surveys prior to mobilization to ensure appropriate protections, actions, licenses and watching briefs are in place*
- ▶ *Our works will be coordinated and arranged to ensure the protection of these species whilst ensuring your works incur minimal disruption*
- ▶ *Where breaking or crushing works are to be undertaken on a project the breaking works will be sited such that it is as far from any vulnerable receptor as possible*
- ▶ *Materials from the works will be processed on site to be stockpiled safely on site for use in pads, backfill or other use, or removed by HGVs to be reused elsewhere*
- ▶ *Dust arisings will be monitored to ensure any dust does not oversail the boundary*



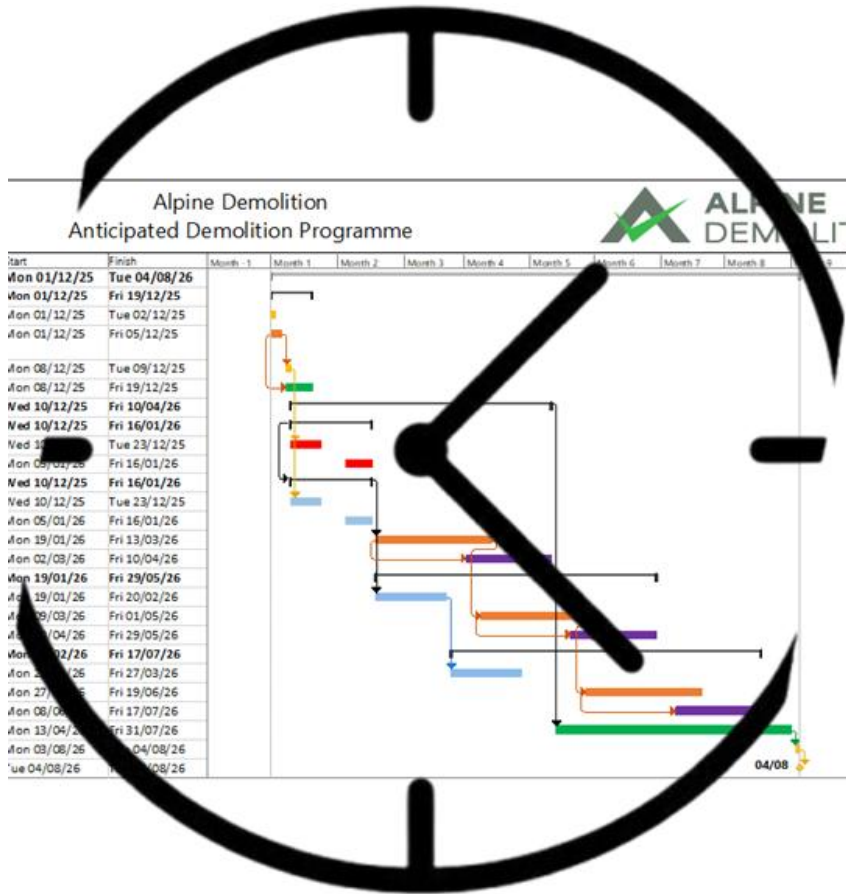


# Asbestos materials

- ▶ A Demolition & Refurbishment asbestos survey will be obtained for each building
- ▶ The surveys will locate and describe all asbestos materials in the buildings
- ▶ Licensed asbestos materials will be removed by an Alpine appointed licensed asbestos removal contractor
- ▶ Non-licensed removal may be undertaken by Alpine Demolition. Our operatives hold Cat B non-licensed asbestos removal accreditation.



# Project Programme



*Full programs will be provided with updated documents given throughout the works*

*For longer and more complex projects our commercial and operational teams will provide fully qualified and resourced programs that will allow further works to be scheduled alongside or following our works*

*Alpine have had multiple sites where phased handover of site and side along working has been managed successfully.*

*Our managers and commercial teams are aware that following trades form a large part of the work we undertake.*



# Personal Protective Equipment (PPE)

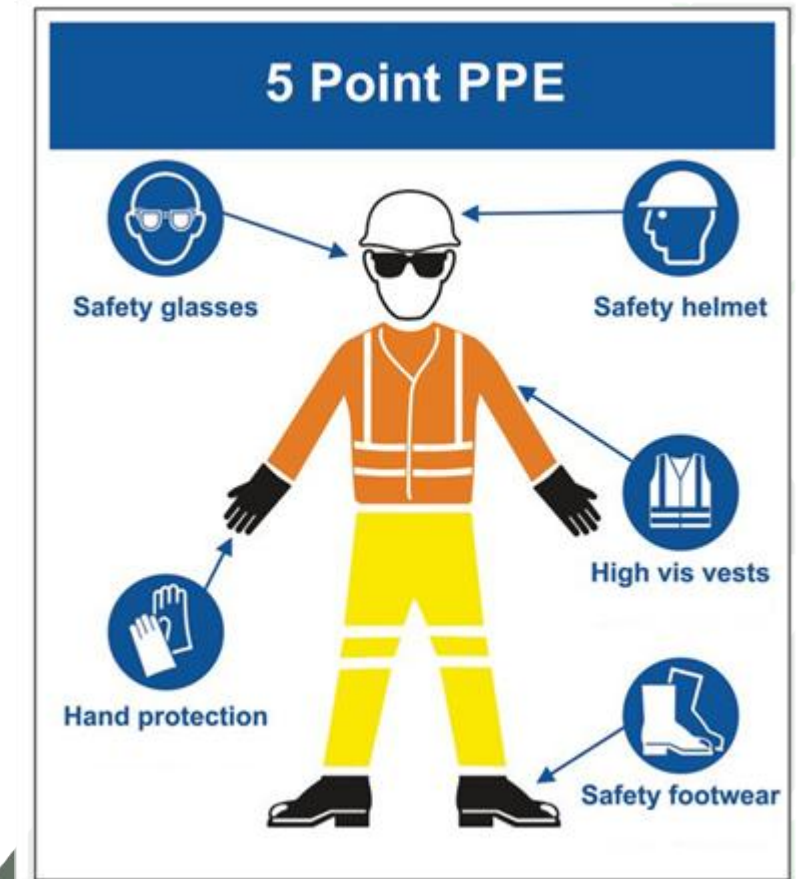
*5 point PPE is available on all of our sites*

*Mandatory PPE : hard hat, hi viz, boots including sole protection with gloves & safety glasses provided*

*Operatives will be supplied with the correct level of personal protection including but not limited to:*

- ▶ *Type 5 white disposable overall*      *BS EN 13982-2*
- ▶ *Particulate dust mask*      *BS EN 143*
- ▶ *Hi-vis jacket / vest*      *BS EN 471*
- ▶ *Helmet*      *BS EN 397*
- ▶ *Safety boots*      *BS EN 345*
- ▶ *Eye protection impact*      *BS EN 166B Grade 1*
- ▶ *Protective gloves*      *BS EN 388*
- ▶ *Ear defenders*      *BS EN 352*

*Any additional PPE or RPE requirements of the client or landowner will be abided by at all times*



# Public Interface and Site Access

- ▶ *Public interface*
  - ▶ *inspection of the boundary each day*
  - ▶ *monitoring of access points*
  - ▶ *ensuring that all persons on site are known to site management*
- ▶ *All demolition and working areas will be “red working zones”*
- ▶ *Areas between working zones will be “yellow non-working zones”*
- ▶ *The welfare and office areas will be “green non-working zones”*
- ▶ *Deliveries and waste away will be staggered to avoid vehicles waiting on the roadway*
- ▶ *Access and roadways will be swept routinely to avoid built up of dust and mud*
- ▶ *Security will be in place out of hours to ensure no encroachment*





# Welfare

- ▶ *Where welfare is provided by Alpine Demolition we will ensure that the welfare is suitable for the personnel load throughout the project and balance the load appropriately*
- ▶ *Welfare will be installed within green zones (non-PPE) with pedestrian access allowed to the toilets, canteen and office facilities*
- ▶ *We will hire units in from reputable suppliers for the duration of the demolition works, available to Alpine and our specialist contractors as well as any visitors, meetings and so on*
- ▶ *Our welfare will usually include:*
  - ▶ *Office facilities*
  - ▶ *Toilets*
  - ▶ *Canteen with hot and cold running water, food preparation and waste disposal facilities*
- ▶ *Our welfare can be uprated to meet client specification and either removed at the end of our program, or by arrangement left onsite for further works*





# Crushing works



- ▶ Alpine own and operate mobile crushing plant
- ▶ Crushing works can be undertaken once enough space has been cleared and material is available to be processed
- ▶ Materials arising from the demolition works will can processed and used as a piling mat on site, removed for reuse elsewhere or sold as recycled material
- ▶ The crusher will be loaded and material stockpiled away from the current demolition face as a separate body of work
- ▶ Dust arisings from the crushing works will be routinely monitored with boundary recording of dust undertaken regularly, recorded on our in house document systems
- ▶ Damping down will be used to mitigate dust arisings, with the crusher having on machine water fed suppression systems and additional damping will be used where necessary
- ▶ Windspeed will be monitored to ensure any dust arisings do not oversail the boundary





Client – Berkeley Homes

Project Value - £2,000,000

Project Program – 28 Weeks

## PROJECT TEAM

Dave Lee, Stuart Tottman, Noel Corbett,  
Mike Brown

## SCOPE OF WORKS

Strip out and asbestos removal works  
Demolition of 6 apartment blocks  
Design and install pile mat, extensive  
ground works incl. remediation

## CHALLENGES

Stringent health & safety controls  
Working with Berkeley Homes and local  
council in a congested urban area  
Tight program to turn around over  
approx. 200 apartments, live services.

## SUMMARY

This project will enable the client to build  
over 300 new homes on this project  
which is Phase 4 of a multi-stage project.  
Acting as PC Alpine will recycle over 90%  
of materials for reuse in the ongoing  
project

# PROJECT REVIEW - Woodberry Down Ph4, London N4





Client – Arcadis

Project Value - £3,250,000

Project Program – 52 Weeks

## PROJECT TEAM

John Price, Andy Deaves, Mike Brown,  
David Flack

## SCOPE OF WORKS

Enabling and Strip out works for  
previously delayed refurbishment project  
Demolition of 3 storey rear wall  
Extensive steel, carpentry, window and  
restoration works throughout

## CHALLENGES

Historic building, including management  
of refurbishment of facade  
Confined urban environment  
Strict local council rules  
Pit lane operation on High Street

## SUMMARY

A high class team of operatives  
undertaking detailed works to protect  
the retained structure whilst enabling  
the investigation and then undertaking  
and managing renovation works

A keystone project in an exclusive  
location in London

# PROJECT REVIEW - Kensington High Street, W8





Client – Yellowstone Homes

Project Value - £985,000

Project Program – 24 Weeks

## PROJECT TEAM

Beanland Associate Architects

Bill Johnson

David Lee

## SCOPE OF WORKS

Termination of existing services.

Protect live UKPN substation.

Asbestos removal.

Demolish hospital buildings.

Clean and store bricks for re-use.

Grub out ground bearing slabs and foundations. Crush arisings.

## CHALLENGES

Minimise dust levels due to live hospital.

Ensure site traffic did not affect operational hospital next door

## SUMMARY

- Recycled 98%
- Cleaned and palleted bricks and slates for re-use later.
- Cleaned and stored timber for re-use later.
- Stockpiled aggregates.

# PROJECT REVIEW - Buckland Hospital, Dover





Client – Acetate Products Limited

Project Value - £3,140,000

Project Program – 38 Weeks

## PROJECT TEAM

RVA Consulting Engineers,  
David Lee, Mike Brown

## SCOPE OF WORKS

Heavy plant removal and demolition of large industrial site including cooling towers.

Demolition scaffolding between housing.  
CCTV surveys, noise, dust & vibration monitoring. Site crushing of arisings.

## CHALLENGES

Coventry Canal bisected site. Liaison with British Waterways

Maintain river flow and ensure no contamination or environmental issues.

## SUMMARY

Use of large plant to carry out the demolition to buildings to minimise use of explosives. This kept the cost lower.  
Successful blow-down of cooling towers.  
90-95% recycling

# PROJECT REVIEW – Courtaulds Factory, Coventry





Client – Anderson Group

Project Value - £540,000

Project Program – 14 Weeks (2 visits)

## PROJECT TEAM

Davies Maguire Engineer

Andersons (QS)

Heritage Conversation

Stuart Hutchings, David Lee

## SCOPE OF WORKS

Carry out SI and design TWS.

Erect demolition scaffolding.

Removal of asbestos.

Structural alteration of listed buildings including diamond sawing.

Temporary weatherproofing to safeguard the listed buildings.

## CHALLENGES

Demolition of a building within a heritage area. Narrow streets

Local residents close by. River Lee runs adjacent.

## SUMMARY

Working with Anderson to carry out the 2 phases to meet their programme.

Cleaned and palletted bricks for re-use.

# PROJECT REVIEW – Swan Wharf, Tower Hamlets





Client – Fairview New Homes

Project Value - £648,000

Project Program – 20 Weeks

## PROJECT TEAM

Fairview New Homes

David Lee, Noel Corbett

## SCOPE OF WORKS

Tree protection & selected removal.

Asbestos removal. M&E Removal .

Demolition of data centre including  
basement box and foundations.

Removal of large substructure

Removal of fuel and water tanks.

Pile probe and install piling mat.

## CHALLENGES

Large number of trees under TPO which  
required pollarding.

Decontaminate & remove asbestos.

Cut & Fill groundworks.

## SUMMARY

Demolition of legacy industrial building  
with contamination requiring controlled  
processes for a large client

Constrained environs and working in close  
co-operation with others

Tree protection paramount

# PROJECT REVIEW – Ford Data Centre, Brentwood





Client – RED Construction

Project Value - £648,000

Project Program – 20 Weeks

## PROJECT TEAM

RED Construction Management

David Lee

Noel Corbett

## SCOPE OF WORKS

Demolition of public interface walls

Management of licensed asbestos removal

Principal demolition of superstructure

Demolition of basement

## CHALLENGES

Direct interface with busy road, requiring managed delivery times

Decontaminate and remove asbestos

Cut & Fill groundworks.

## SUMMARY

Demolition of former care home as part of building upgrade process

Urban location requiring strict controls on local environment emissions and impact

# PROJECT REVIEW – Royal Cambridge Home, Molesey





Client – Technique Project

Project Value - £157,000

Project Program – 4 Weeks

## PROJECT TEAM

David Lee

Stuart Hutchings

## SCOPE OF WORKS

Decommissioning and removing UPS switchgear and cabling in a live data centre.

## CHALLENGES

Working in a live data centre on the 6th floor.

Close and well-coordinated communications between site and data centre managers.

Control of dust and vibration.

Working around live comms services.

## SUMMARY

No power or data outages.

Happy client.

Completed on time, within budget.

Recycled 100%

## PROJECT REVIEW – Global Switch Data Centre, East India Dock





Client – ISG

Project Value - £1,700,000

Project Program – 24 Weeks

## PROJECT TEAM

QS: Adrian Ashbourne

David Lee

Stuart Hutchings

## SCOPE OF WORKS

Soft strip and asbestos removal.

Top down structural demolition of 8 storeys above ground & 3 storeys below.

Design and install temporary steel support works.

Removing heavy duty bank vaults.

Groundworks.

## CHALLENGES

Deconstruction in city environment with adjoining properties.

Removing heavy duty bank vaults.

## SUMMARY

9 storey office block in the City of London

Top down methodology

Groundworks undertaken in the basement whilst demolition was progressing

## PROJECT REVIEW – Lombard Street, City of London





Client – Fairview Homes

Project Value - £1,800,000

Project Program – 28 Weeks

## PROJECT TEAM

David Lee, Mike Brown  
Noel Corbett

## SCOPE OF WORKS

Principal Contractor

Asbestos removal work management

Demolition of all buildings, slabs & foundations

Reduced level dig

Site remediations

On-site recycling & concrete crushing

Installation of 15,000m2 piling mat

## CHALLENGES

Discovery and dealing with additional ACMs and unknown below ground tanks and interceptors.

Consolidating formation level and installation of pile mat during extremely wet February 2020.

## SUMMARY

Phased handover to enable early piling and mitigate delay due to wet weather.

All works completed to client satisfaction.

# PROJECT REVIEW – Chailey Industrial Estate, Hayes





Client – Knight Webb

Project Value - £960,000

Project Program – 25 Weeks

## PROJECT TEAM

Block Industrial

CDM Contract Services

David Lee

Bill Johnson

## SCOPE OF WORKS

Decommissioning of factory estate.

Removal of asbestos and other

Hazardous materials

Crush all arisings.

## CHALLENGES

Stability during demolition.

Decontaminating.

Removal of the underground structures

## SUMMARY

Recycled 98% of materials arising

Major earthworks while contending with  
contaminated soils.

# PROJECT REVIEW - Weetabix Factory, Corby







**Email**

*janice@alpinedemolition.co.uk*



**Phone**

*01474 741 111*



**Alpine Demolition Limited**

*Weighbridge House,  
Grove End Farm,  
Bredgar Road,  
Tunstall, Kent,  
ME9 8DY*